

INSIDE

DOOR
EDGE

OUTSIDE

FSB

SPECIAL NOTE:
THIS TEMPLATE IS NOT
"HANDED", PAY ATTENTION
TO INSIDE AND OUTSIDE
ON THE DRAWING

DOOR TEMPLATE
SERIES SML - STANDARD MORTISE
TRIM SET - RA-S, RD-S, RM-S

2 3/4" BACKSET

FUNCTION:
E - PRIVACY

NOTE:
TEMPLATE VALID FOR
BOTH N AND I EMERGENCY
RELEASE OPTIONS

EMERGENCY RELEASE HOLE
7/8" DIAMETER

CL OF ANSI STRIKE
CL OF LOCK

THROUGH BOLT HOLE
3/8" DIAMETER
CL OF LEVER / KNOB

LEVER / KNOB HOLE
1" DIAMETER

THROUGH BOLT HOLE
3/8" DIAMETER

FSB
North America

Tel 203 404 4700
Fax 203 404 4710

www.fsbna.com
info@fsbna.com

RESPONSIBILITY:
DOOR AND FRAME FABRICATORS
ARE RESPONSIBLE FOR PROVIDING
ADEQUATE CONSTRUCTION OR
REINFORCEMENTS FOR PROPER
INSTALLATION OF HARDWARE

NOTE:
BACKSET MEASURED FROM
CENTER OF DOOR EDGE

DWG NO.: SML-E-RAS_RDS_RMS-234-134.DWG
REVISION: 03/30/14

THUMBTURN HOLE
7/8" DIAMETER

CL OF ANSI STRIKE
CL OF LOCK

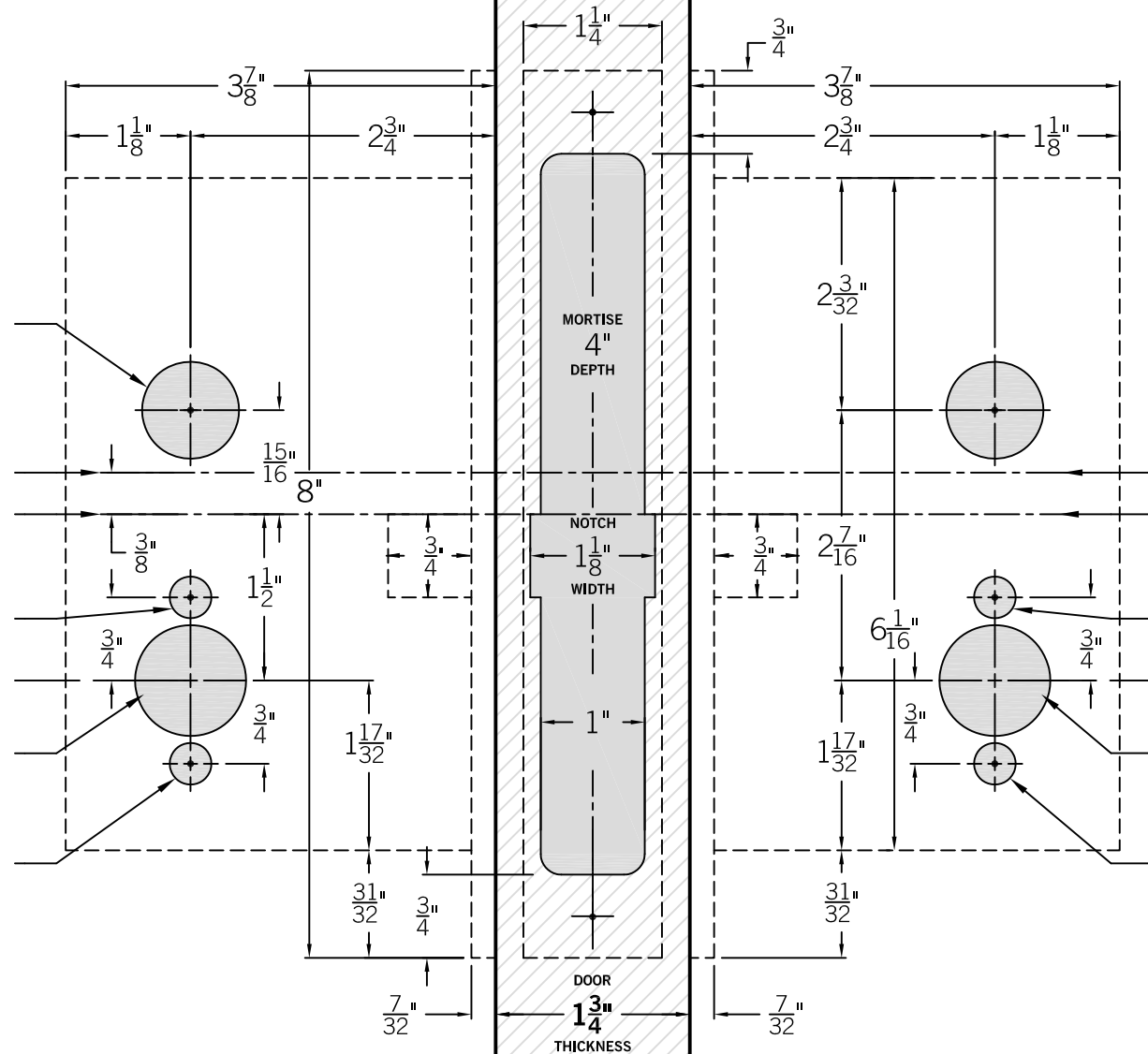
THROUGH BOLT HOLE
3/8" DIAMETER

CL OF LEVER / KNOB

LEVER / KNOB HOLE
1" DIAMETER

THROUGH BOLT HOLE
3/8" DIAMETER

DOOR EDGE
DOOR EDGE

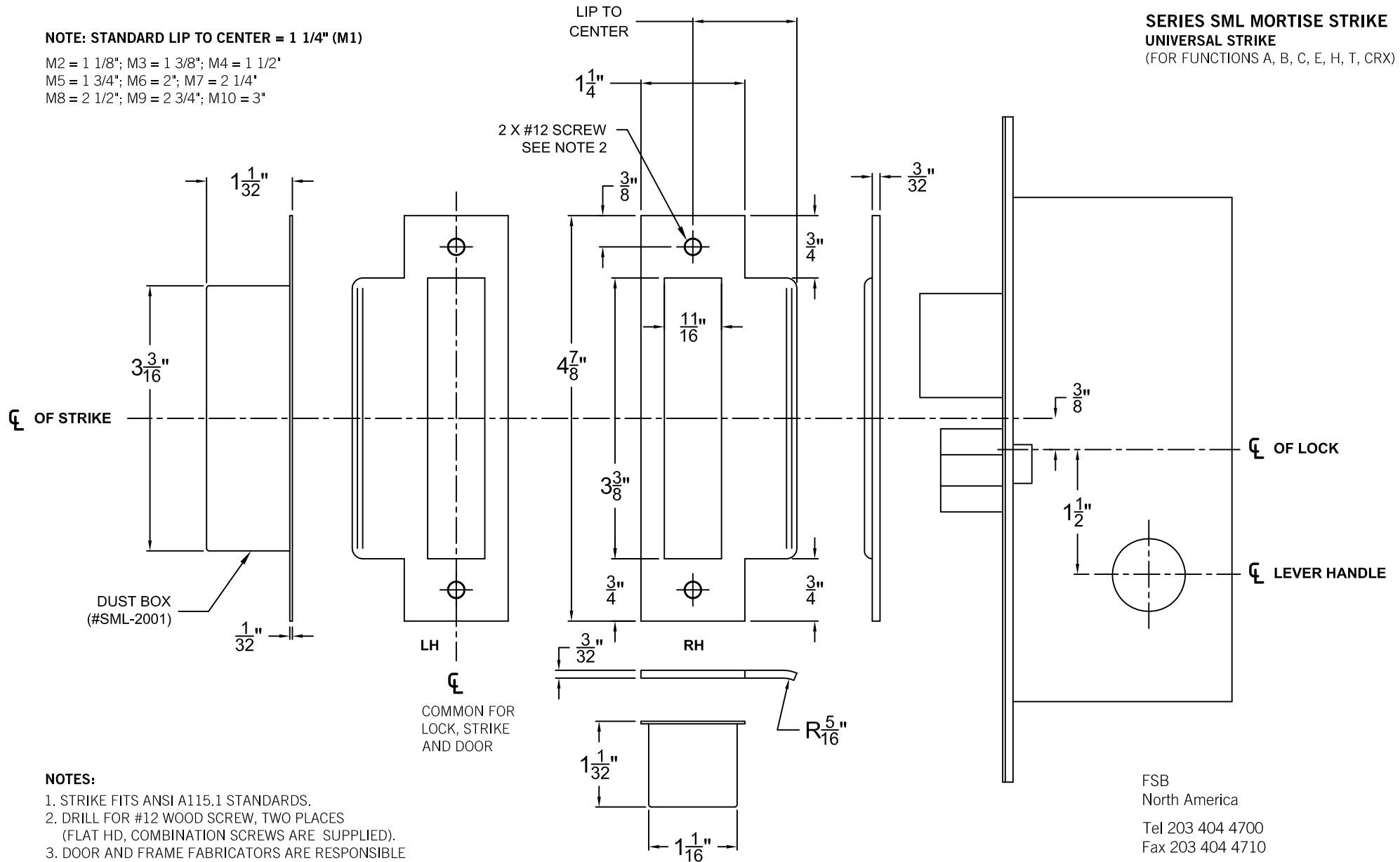


**STRIKE/DUST BOX DETAIL
FOR WOOD DOORS/FRAMES**

**SERIES SML MORTISE STRIKE
UNIVERSAL STRIKE
(FOR FUNCTIONS A, B, C, E, H, T, CRX)**

NOTE: STANDARD LIP TO CENTER = 1 1/4" (M1)

M2 = 1 1/8"; M3 = 1 3/8"; M4 = 1 1/2"
M5 = 1 3/4"; M6 = 2"; M7 = 2 1/4"
M8 = 2 1/2"; M9 = 2 3/4"; M10 = 3"



NOTES:

1. STRIKE FITS ANSI A115.1 STANDARDS.
2. DRILL FOR #12 WOOD SCREW, TWO PLACES (FLAT HD, COMBINATION SCREWS ARE SUPPLIED).
3. DOOR AND FRAME FABRICATORS ARE RESPONSIBLE FOR PROVIDING ADEQUATE CONSTRUCTION OR REINFORCEMENT FOR PROPER INSTALLATION OF HARDWARE.

FSB
North America
Tel 203 404 4700
Fax 203 404 4710
www.fsbna.com
info@fsbna.com