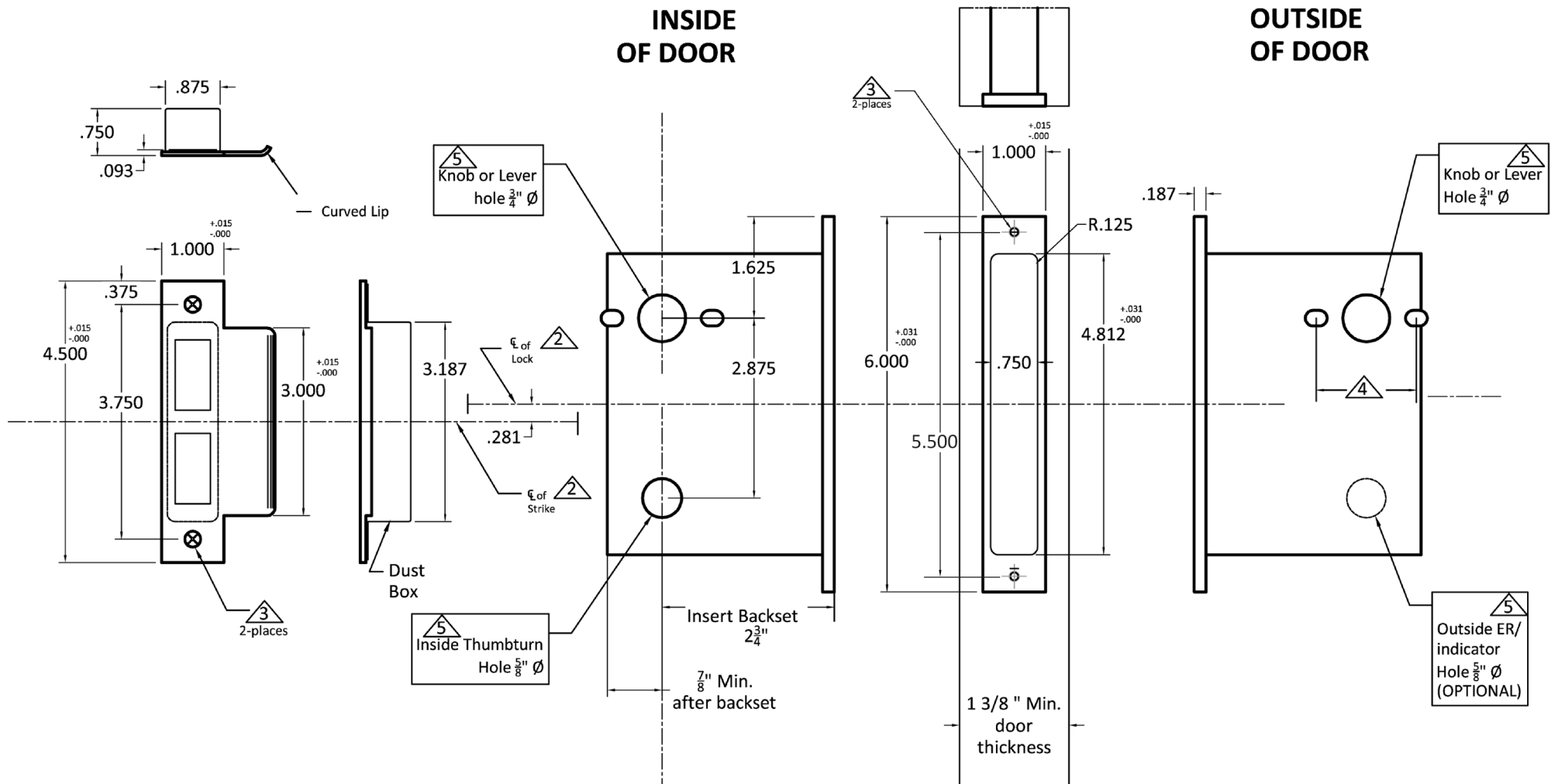


INSIDE OF DOOR

OUTSIDE OF DOOR



Notes:

- ⚠ Centerline of strike is $\frac{9}{32}$ " lower than Centerline of front.
- ⚠ Prep for #8 wood or 8-32 machine screws.
- ⚠ Through-bolting holes **ONLY** if required. See trim manufacturers standard template for details. Accurate lock's accommodates $1\frac{1}{2}$ " to $1\frac{11}{16}$ " center to centers and up to $\frac{1}{4}$ " dia. post.
IMPORTANT: Through-bolting holes only apply to 2 1/2" and 2 3/4" backset locks (there is no through-bolting on the 2" backset version)
- ⚠ Knob, thumbturn and ER holes may vary from different trim manufacturers. Please refer to their templates to confirm these dimensions.

Additional Notes:

- a) **Responsibility:** Door and frame manufacturers are responsible for providing adequate construction or re-inforcement for proper installation of hardware shown.
- b) See Spec.9839 for additional details.



ACCURATE
LOCK & HARDWARE
AMERICAN CRAFTED SINCE 1972