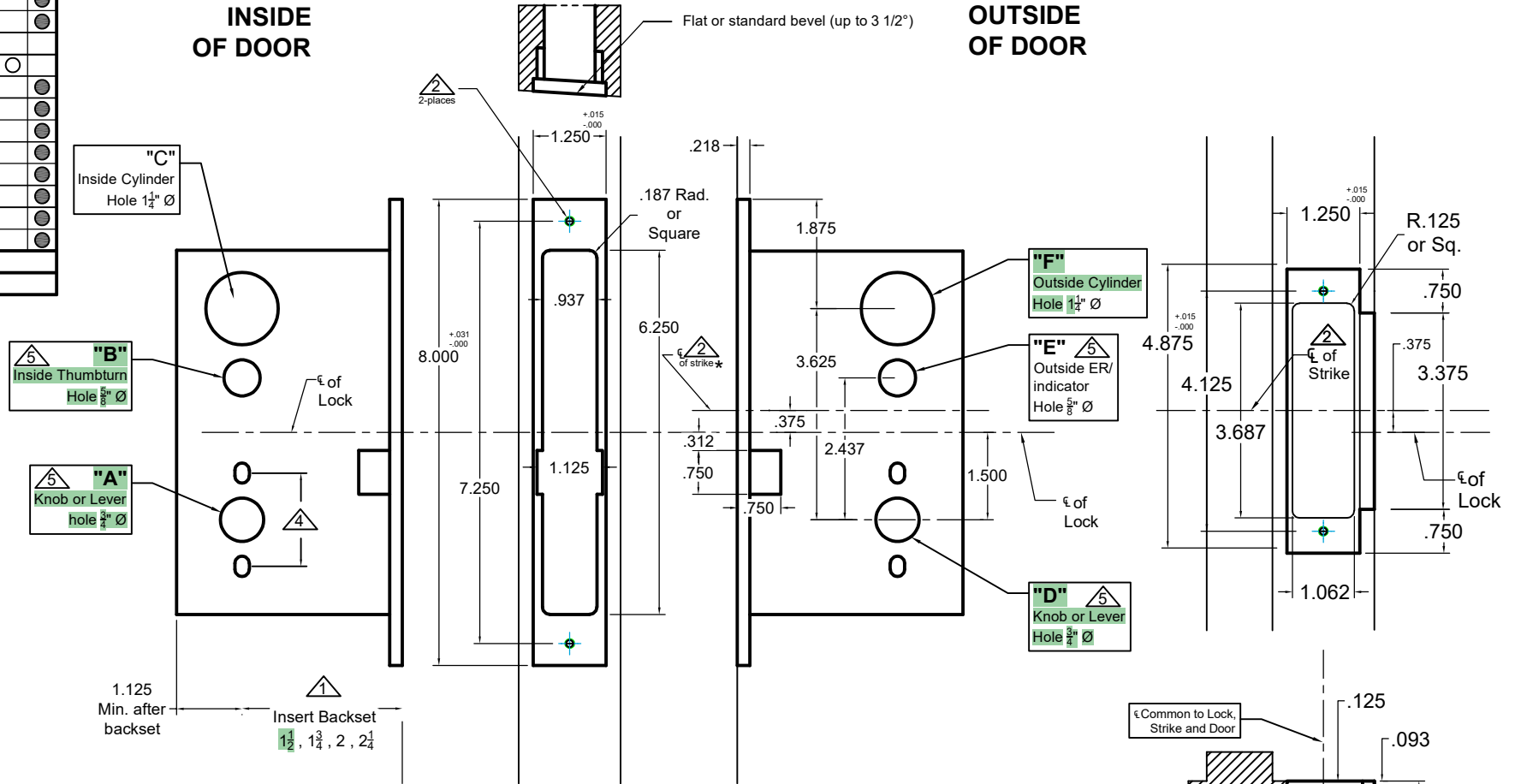


Lock Functions	A	B	C	D	E	F
8800ADL	●			●		
8801*			●			●
8802*						●
8803*	●	●		●	●	●
8822	●		●	●	●	●
8824	●	●		●	●	●
8825	●			●	●	●
8839	●			●	○	●
8842	●		●	●	●	●
8845	●			●	●	●
8845S	●		●	●	●	●
8848	●	●		●	●	●
8849	●	●		●	●	●
8856	●			●	●	●
8858	●		●	●	●	●
8859	●			●	●	●

(no strike needed)

● Required Holes
○ Optional Holes



Notes:

- ▲ Insert backset here 1 1/2", 1 3/4", 2", 2 1/4"
 - ▲ ASA strike 3/8" above centerline of lock. **NOTE: use template #T-ALH.ASADB.STK for #s 8801,8802 and 8803**
 - ▲ Prep for #12 wood or 12-24 machine screws
 - ▲ Thru bolting holes **ONLY** if required. See trim manufacturers standard template for details.
- Accurate lock's accommodates 1 1/2" to 1 11/16" center to centers and up to 1/4" dia. post.
If there are any additional questions about the thru-bolting, please contact our office.
- ▲ Knob, thumbturn and ER holes may vary from different trim manufacturers. Please refer to their templates to confirm these dimensions.

Additional Notes:

- a) **Responsibility:** Door and frame manufacturers are responsible for providing adequate construction or re-inforcement for proper installation of hardware shown.
- b) Please contact us if a double lip strike is needed - for a proper template
- c) See catalog / spec sheets for additional lock details



Standard 8800 Lever x Lever or Knob x Knob Template All Backsets

T-ALH.8800.LL