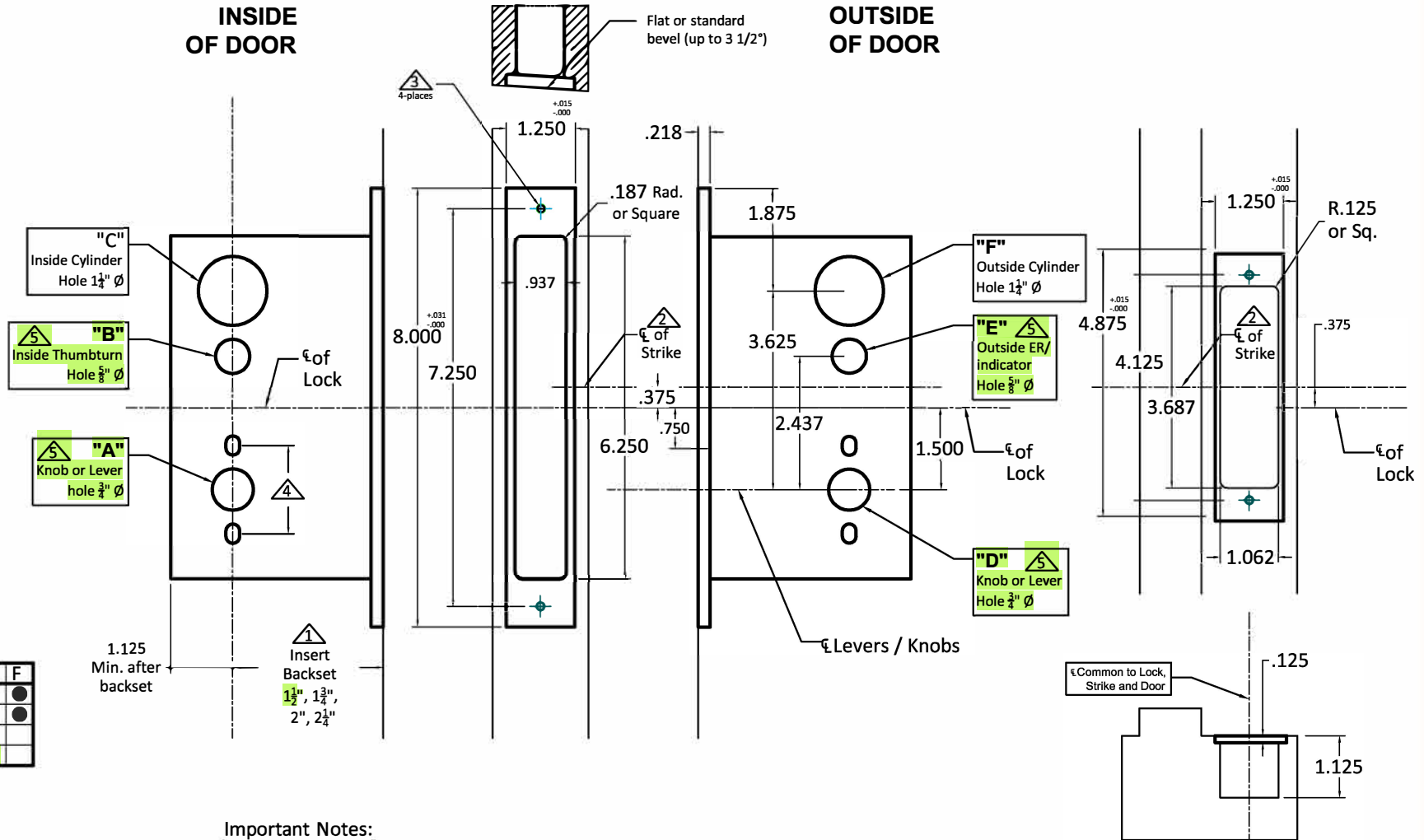


INSIDE OF DOOR

OUTSIDE OF DOOR



Functions	A	B	C	D	E	F
8822ML	●	●	●	○	○	○
8824ML	○	○	○	○	○	○
8825ML	○	○	○	○	○	○
8839ML	●	●	○	○	○	○

● Required Holes
○ Optional Holes

Important Notes:

- ① Insert backset here 1 1/2", 1 3/4", 2", 2 1/4"
- ② ASA strike mounted 3/8" ABOVE centerline of lock
- ③ Prep for #12 wood or 12-24 machine screws (Lock and Strike)
- ④ Thru bolting holes **ONLY** if required. See trim manufacturers standard template for details.
Accurate lock's accommodates 1 1/2" to 1 11/16" center to centers and up to 1/4" dia. post.
If there are any additional questions about the thru-bolting, please contact our office.
- ⑤ Knob/Lever, Thumbturn and ER holes may vary from different trim manufacturers. Please refer to their templates to confirm these dimensions.

Additional Notes:

- a) **Responsibility:** Door and frame manufacturers are responsible for providing
- adequate construction or re-inforcement for proper installation of hardware shown.
- c) See catalog / spec sheets for additional lock details



Standard 8800ML Magnetic
Lever x Lever or Knob x Knob
Template - All Backsets

T-ALH.8800.ML