

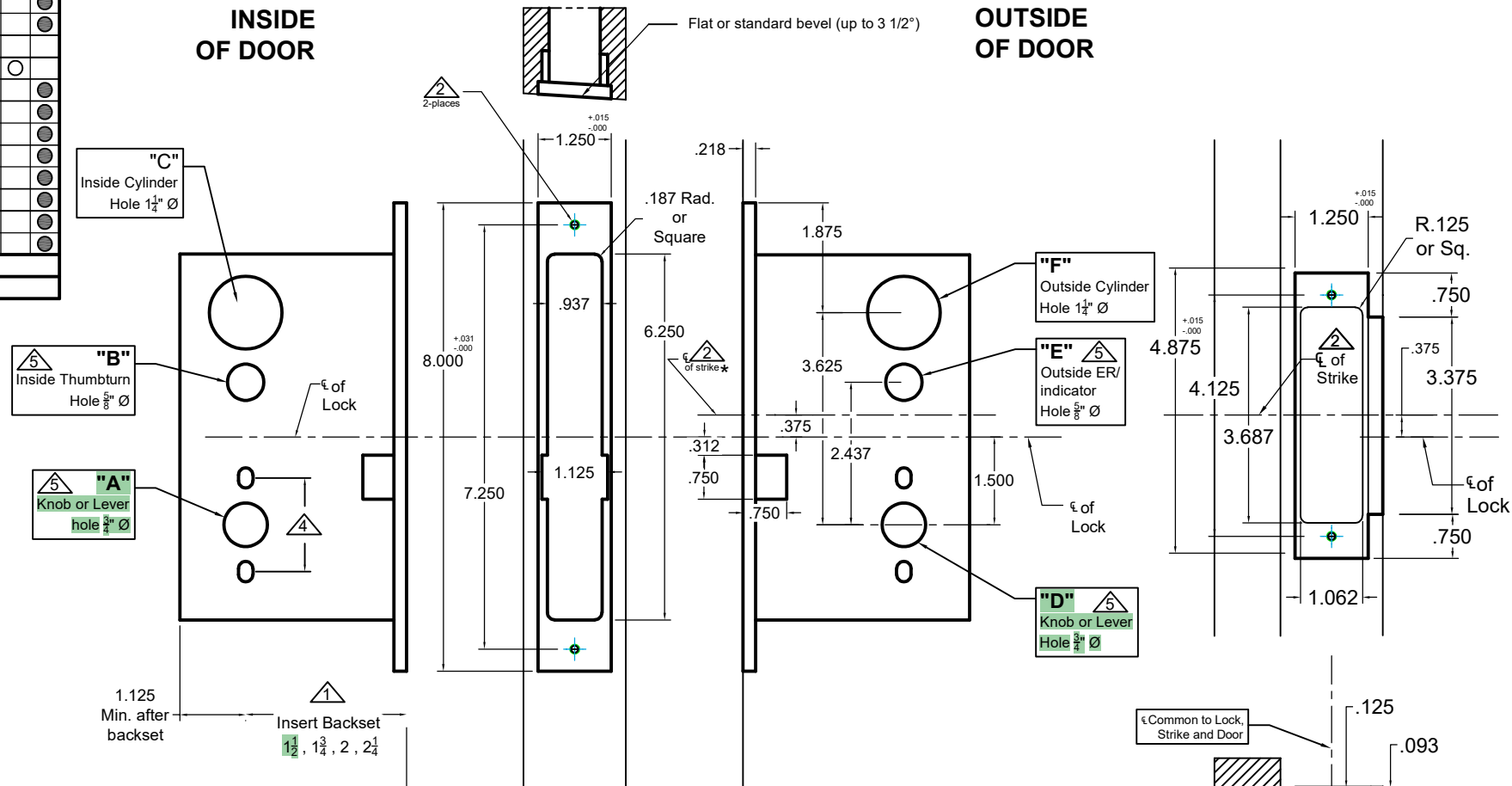
Lock Functions	A	B	C	D	E	F
8800ADL	●			●		
8801*			●			●
8802*			●			●
8803*		●				●
8822	●		●	●		●
8824	●	●		●		●
8825	●			●		●
8839	●	●		●	○	●
8842	●		●	●		●
8845	●			●		●
8845S	●		●	●		●
8848	●	●		●		●
8849	●	●		●		●
8856	●		●	●		●
8858	●		●	●		●
8859	●			●		●

● Required Holes  
○ Optional Holes

(no strike needed)

### INSIDE OF DOOR

### OUTSIDE OF DOOR



#### Notes:

- ▲ Insert backset here  $1\frac{1}{2}"$ ,  $1\frac{3}{4}"$ ,  $2"$ ,  $2\frac{1}{4}"$
  - ▲ ASA strike  $\frac{5}{8}"$  above centerline of lock. \*\*NOTE: use template #T-ALH.ASADB.STK for #s 8801,8802 and 8803\*\*
  - ▲ Prep for #12 wood or 12-24 machine screws
  - ▲ Thru bolting holes **ONLY** if required. See trim manufacturers standard template for details.
- Accurate lock's accommodates  $1\frac{1}{2}"$  to  $1\frac{11}{16}"$  center to centers and up to  $\frac{1}{4}"$  dia. post.  
If there are any additional questions about the thru-bolting, please contact our office.
- ▲ Knob, thumbturn and ER holes may vary from different trim manufacturers. Please refer to their templates to confirm these dimensions.

#### Additional Notes:

- a) **Responsibility:** Door and frame manufacturers are responsible for providing adequate construction or re-inforcement for proper installation of hardware shown.
- b) Please contact us if a double lip strike is needed - for a proper template
- c) See catalog / spec sheets for additional lock details



**ACCURATE**  
LOCK & HARDWARE  
AMERICAN CRAFTED SINCE 1972

Standard 8800 Lever x Lever or Knob x Knob Template All Backsets

T-ALH.8800.LL