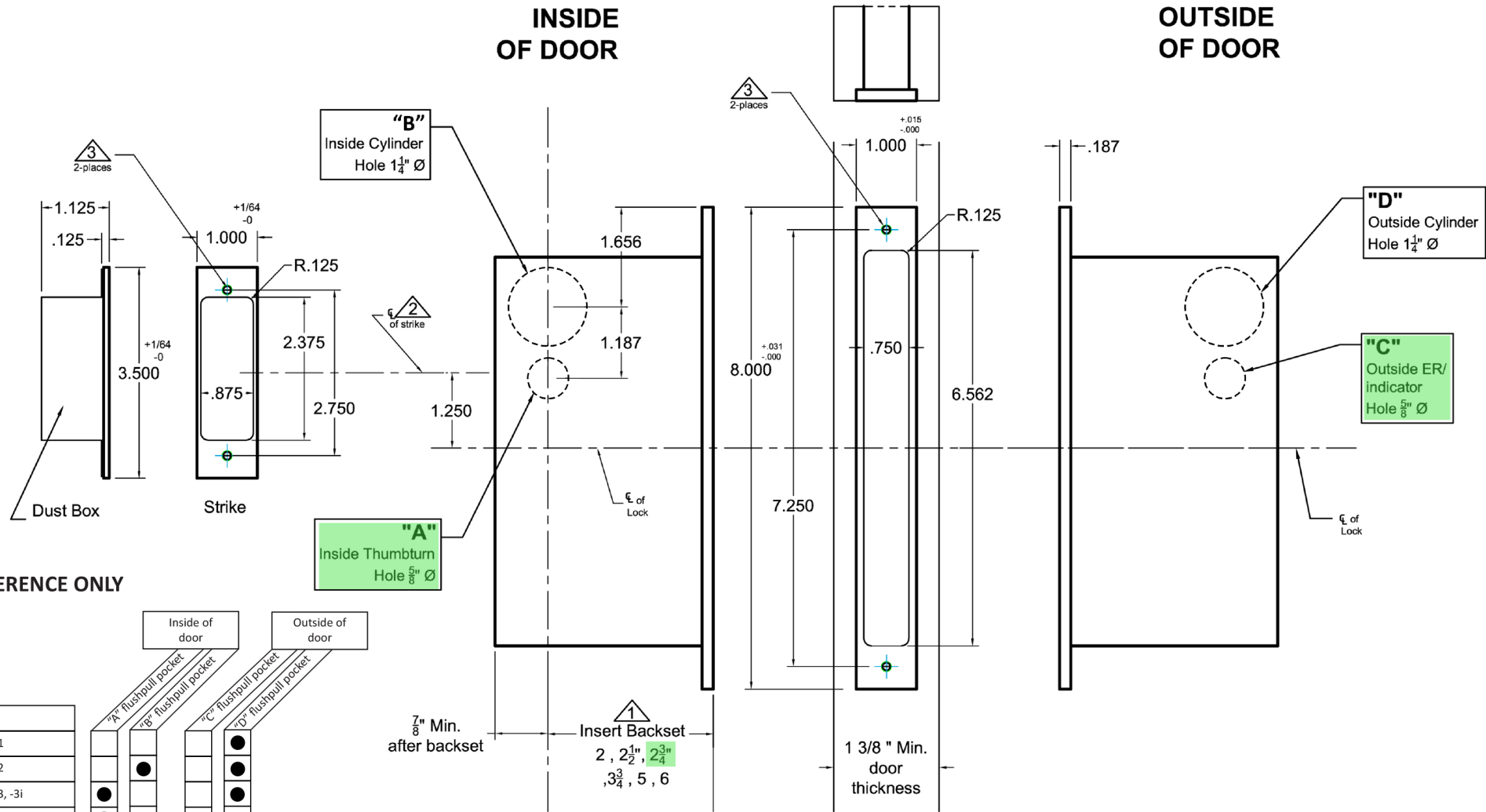
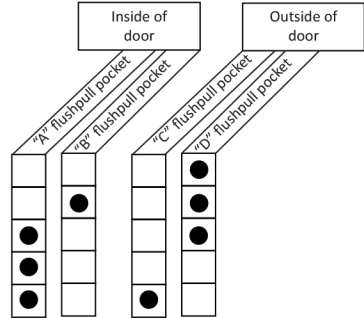


INSIDE OF DOOR

OUTSIDE OF DOOR



FOR REFERENCE ONLY



Lock Functions
2002CPDL/2002Q-1
2002CPDL/2002Q-2
2002CPDL/2002Q-3, -3i
2002CPDL/2002Q-4
2002CPDL/2002Q-5, -5i

● Requires Hole

Notes:

- 1 Insert backset here 2", 2 1/2", 2 3/4", 3 3/4", 5", 6"
- 2 Strike is 1 1/4" above centerline of lock
- 3 Prep for #8 wood or 8-32 machine screws

Additional Notes:

- a) **Responsibility:** Door and frame manufacturers are responsible for providing adequate construction or re-inforcement for proper installation of hardware shown.
- b) See Spec.2002CPDL/2002Q for additional lock details.

NOTE:

Pocket Door locks typically require Flush Pulls. Please cross reference with Flush Pull template from Accurate or other manufacturer.



Standard 2002CPDL/2002Q Quiet Pocket Door Lock with Integrated Edge Pull- Lock Only, All Backsets

T-ALH.2002CPDL.2002Q