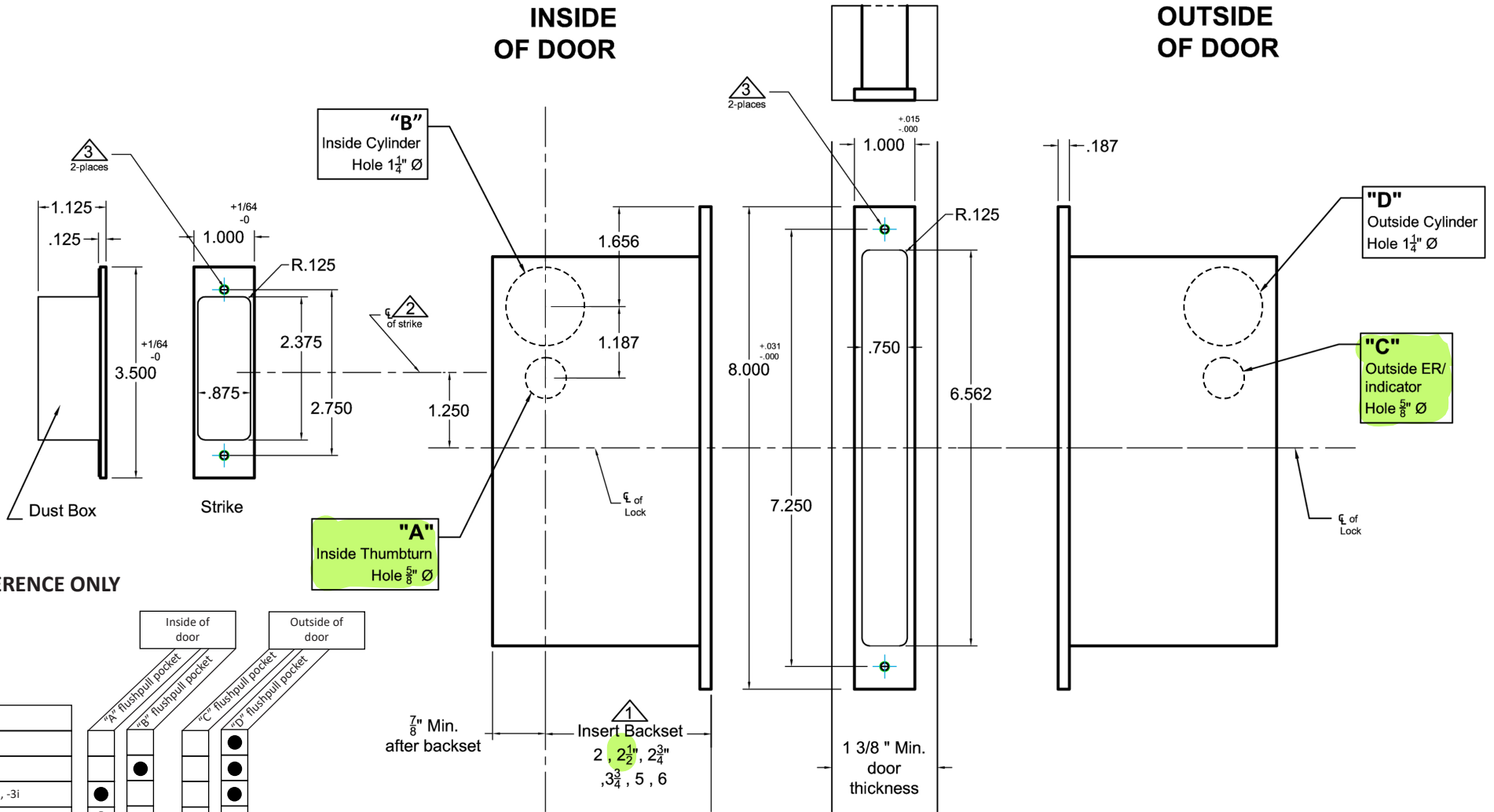


INSIDE OF DOOR

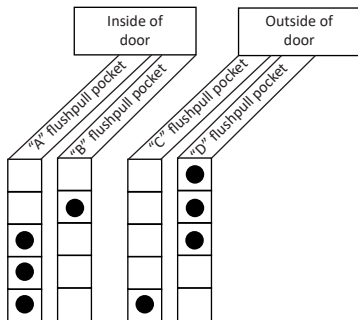
OUTSIDE OF DOOR



FOR REFERENCE ONLY

Lock Functions
2002CPDL/2002Q-1
2002CPDL/2002Q-2
2002CPDL/2002Q-3, -3i
2002CPDL/2002Q-4
2002CPDL/2002Q-5, -5i

● Requires Hole



Notes:

- ▲ Insert backset here 2", 2 $\frac{1}{2}$ ", 2 $\frac{3}{4}$ ", 3 $\frac{3}{4}$ ", 5", 6"
- ▲ Strike is 1 $\frac{1}{4}$ " above centerline of lock
- ▲ Prep for #8 wood or 8-32 machine screws

Additional Notes:

- a) **Responsibility:** Door and frame manufacturers are responsible for providing adequate construction or re-inforcement for proper installation of hardware shown.
- b) See Spec.2002CPDL/2002Q for additional lock details.

NOTE:

Pocket Door locks typically require Flush Pulls. Please cross reference with Flush Pull template from Accurate or other manufacturer.



Standard 2002CPDL/2002Q Quiet Pocket Door Lock with Integrated Edge Pull- Lock Only, All Backsets

T-ALH.2002CPDL.2002Q