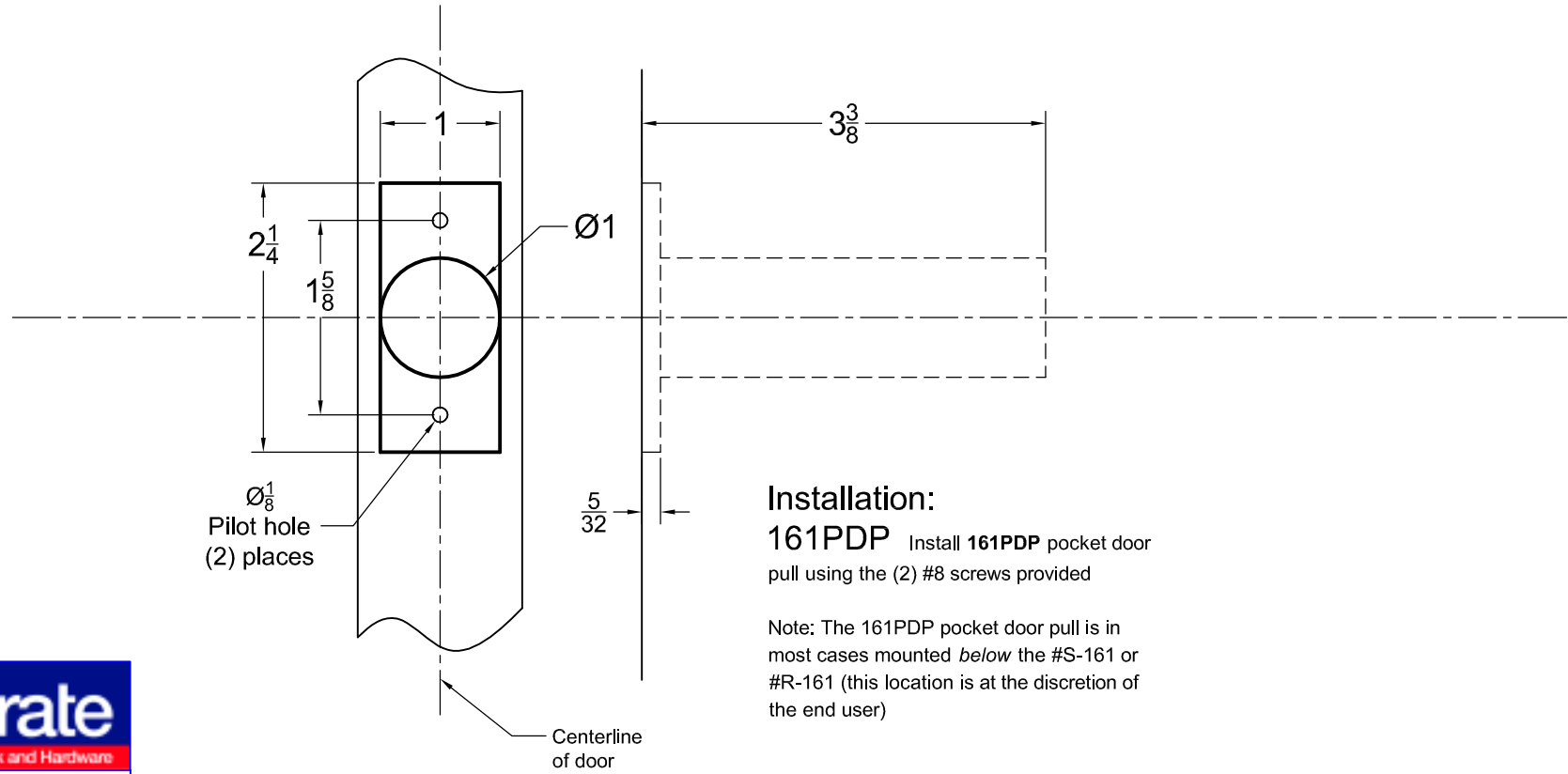
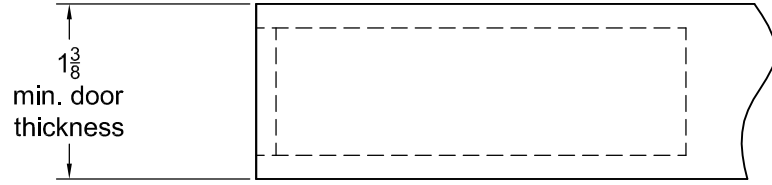


Responsibility:
 Door And Frame Manufacturers Are Responsible For
 Providing Adequate Construction Or Re-Inforcement
 For Proper Installation Of Hardware Shown.



Installation:
161PDP Install **161PDP** pocket door
 pull using the (2) #8 screws provided

Note: The 161PDP pocket door pull is in
 most cases mounted *below* the #S-161 or
 #R-161 (this location is at the discretion of
 the end user)



161PDP pocket door pull - NO TRIM

DRAWN BY: MS DATE: 1/27/11	SCALE: NONE
-------------------------------	----------------

DWG. NO.	T-161PDP(W)	REV
----------	-------------	-----